

Encore Profile Mini Color



Light Efficiency:



Light Quality:



Color Temperature:



Output: 585 lm

Peak: 1410 cd

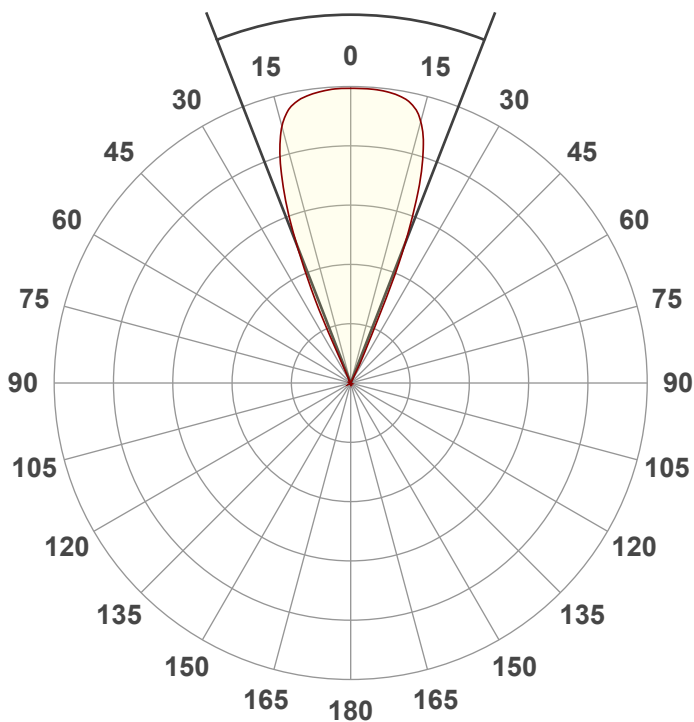
Power: 40.0 W

PF: 0.99



Beam Angle

42.6°



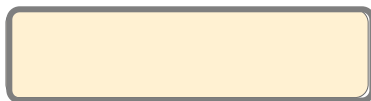
Test:

Zoom 50deg Full On

Date:

9/7/2023

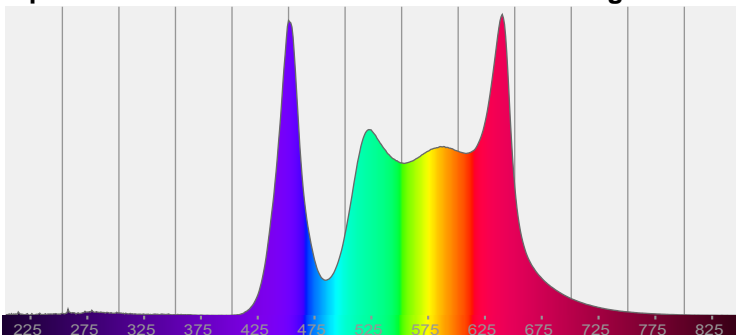
Note:



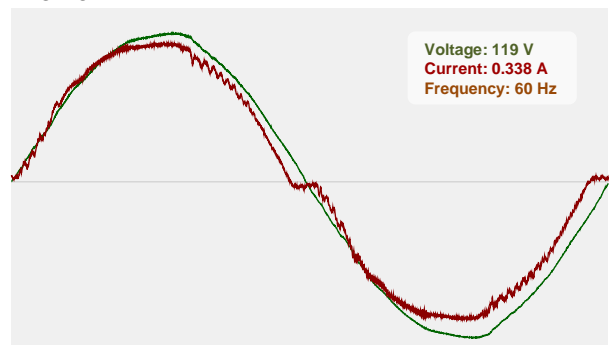
CIE 1931
x: 0.364
y: 0.351

Spectra

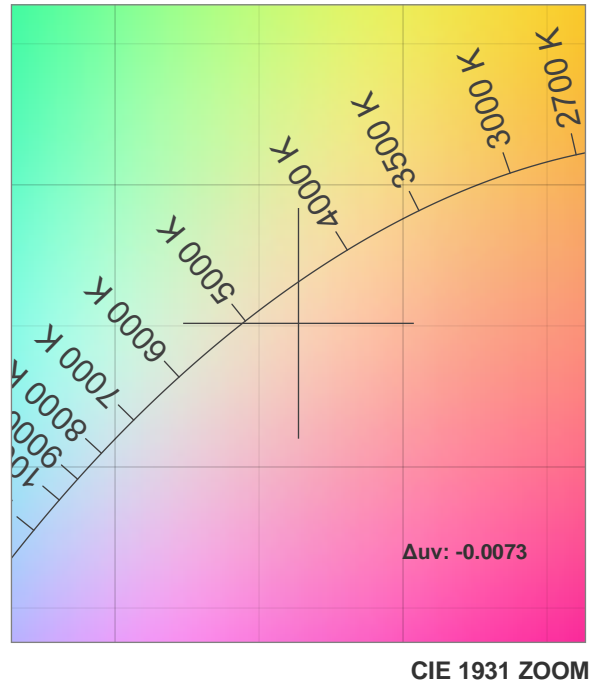
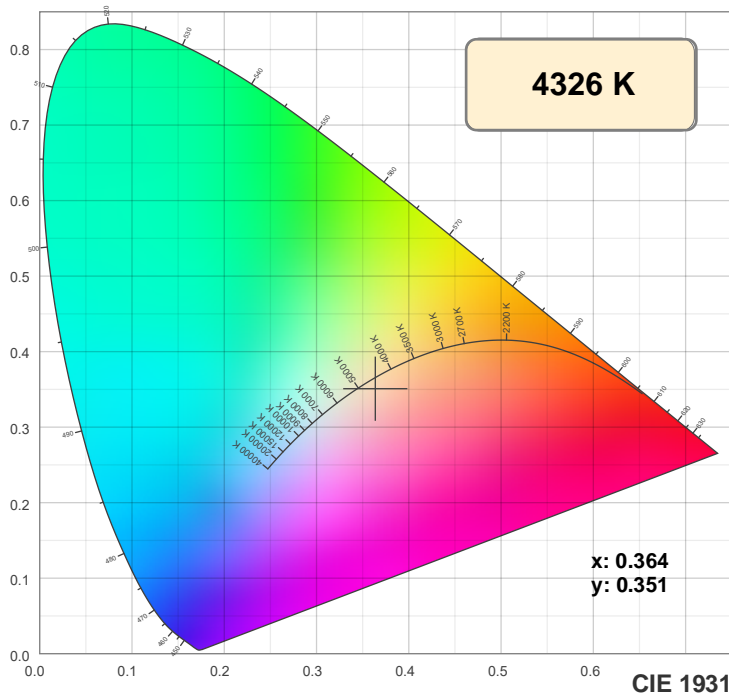
Dominant Wavelength: 588nm



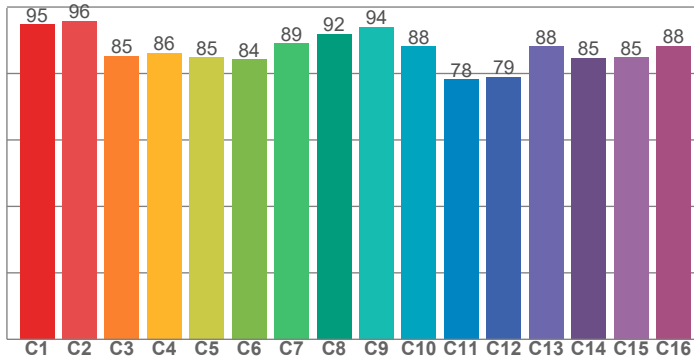
Power



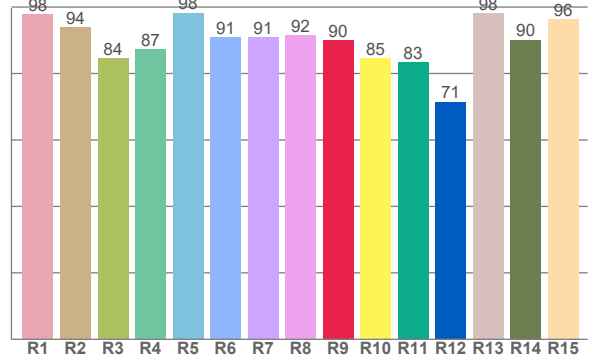
Color Details



TM30: 87.5



CRI: 91.9 (R1-R8)



CRI R values, only R1-R8 are used to calculate final CRI value

R1	R2	R3	R4	R5	R6	R7	R8	R9	R10	R11	R12	R13	R14	R15
97.7	94.0	84.5	87.4	98.3	90.9	90.8	91.5	90.0	84.5	83.5	71.5	98.2	90.1	96.2

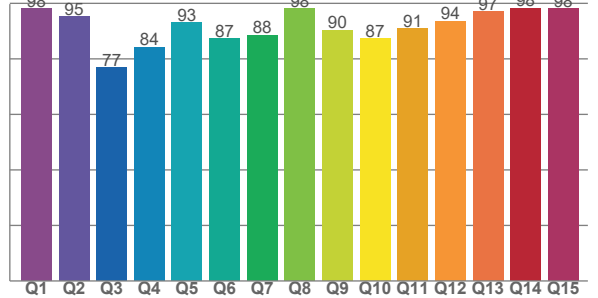
TM30 C values, 16 binned values out of total of 99 C values

C1	C2	C3	C4	C5	C6	C7	C8	C9	C10	C11	C12	C13	C14	C15	C16
94.8	95.8	85.3	86.2	84.9	84.3	89.0	91.9	94.0	88.2	78.2	78.9	88.1	84.8	84.8	88.2

CQS Q values

Q1	Q2	Q3	Q4	Q5	Q6	Q7	Q8	Q9	Q10	Q11	Q12	Q13	Q14	Q15
98.1	95.1	76.8	84.3	93.0	87.3	88.5	98.2	90.4	87.3	91.0	93.6	97.0	98.3	98.0

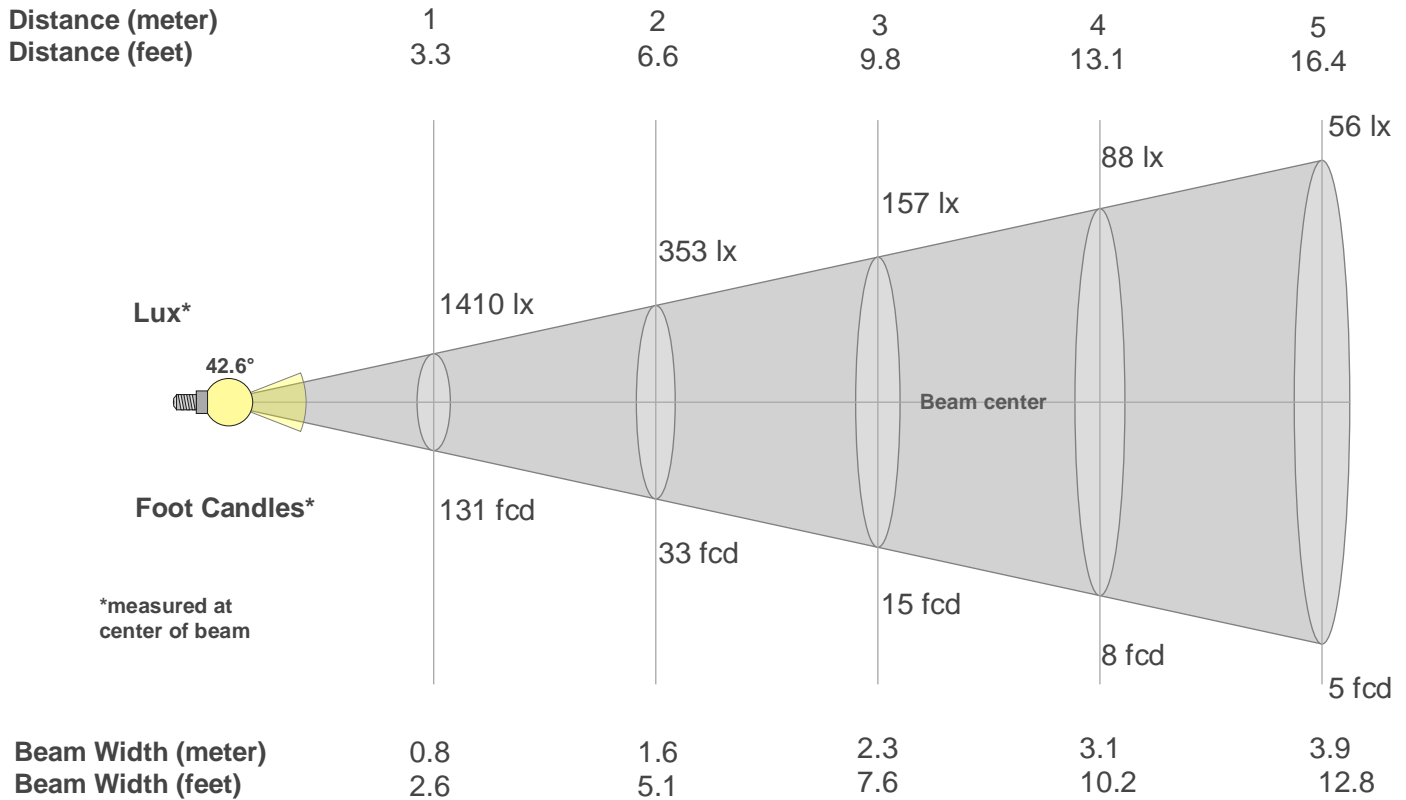
CQS: 89.8



Color Parameters

Color Temperature	Color Rendering Index	Red Component	Color Fidelity	Color Gamut	Color Quality Scale	Color Coordinate CIE 1931	Color Coordinate CIE 1931	Color Coordinate	Color Coordinate	Color Deviation from Black Body
CCT	CRI	CRI R9	TM30 Rf	TM30 Rg	CQS	x	y	u	v	Δuv
4326 K	91.9	90.0	87.5	107.8	89.8	0.364	0.351	0.224	0.325	-0.0073

Beam Details



Beam Intensities from 1-20m

m	1	2	3	4	5	6	7	8	9	10	11	12	13	14	15	16	17	18	19	20
ft	3.3	6.6	9.8	13.1	16.4	19.7	23	26.2	29.5	32.8	36.1	39.4	42.7	45.9	49.2	52.5	55.8	59.1	62.3	65.6
lx	1410	353	157	88	56	39	29	22	17	14	12	10	8	7	6	6	5	4	4	4
fcd	131	32.8	14.6	8.2	5.2	3.6	2.7	2	1.6	1.3	1.1	0.9	0.8	0.7	0.6	0.5	0.5	0.4	0.4	0.3

Intensities in 0° C-plane

0°	2°	4°	6°	8°	10°	12°	14°	16°	18°	20°	22°	24°	26°	28°	30°	32°	34°	36°	38°
1410	1410	1407	1402	1393	1379	1352	1301	1216	1081	874	599	284	22	4	2	1	1	1	0
100%	100%	100%	99%	99%	98%	96%	92%	86%	77%	62%	42%	20%	2%	0%	0%	0%	0%	0%	0%

Intensities in 90° C-plane

0°	2°	4°	6°	8°	10°	12°	14°	16°	18°	20°	22°	24°	26°	28°	30°	32°	34°	36°	38°
1410	1410	1407	1402	1393	1379	1352	1301	1216	1081	874	599	284	22	4	2	1	1	1	0
100%	100%	100%	99%	99%	98%	96%	92%	86%	77%	62%	42%	20%	2%	0%	0%	0%	0%	0%	0%

Intensities in 180° C-plane

0°	2°	4°	6°	8°	10°	12°	14°	16°	18°	20°	22°	24°	26°	28°	30°	32°	34°	36°	38°
1410	1410	1410	1407	1401	1390	1371	1326	1240	1098	888	603	242	64	4	3	2	1	1	0
100%	100%	100%	100%	99%	99%	97%	94%	88%	78%	63%	43%	17%	5%	0%	0%	0%	0%	0%	0%

Intensities in 270° C-plane

0°	2°	4°	6°	8°	10°	12°	14°	16°	18°	20°	22°	24°	26°	28°	30°	32°	34°	36°	38°
1410	1410	1410	1407	1401	1390	1371	1326	1240	1098	888	603	242	64	4	3	2	1	1	0
100%	100%	100%	100%	99%	99%	97%	94%	88%	78%	63%	43%	17%	5%	0%	0%	0%	0%	0%	0%

Beam Angle 50%	Field Angle 10%	Cutoff Angle 2,5%	Intensity Ratio in 120° Cone	Intensity Ratio in 90° Cone
42.6°	49.7°	52°	99.9%	99.9%